



Riders' Advisory Council MARTA Bus Rapid Transit Program Update

Marcus Arnold
Director of Federal Corridors & Hubs

Tracie Roberson
Transit System Project Planner

February 7, 2024

AGENDA

- ✓ MARTA 2040 Program/Bus Rapid Transit
- ✓ Project Development/FTA CIG Program
- ✓ MARTA Rapid Southlake
- ✓ MARTA Rapid Campbellton
- ✓ Future Planning Initiatives

MARTA 2040 PROGRAM

The MARTA 2040 Expansion Program consists of implementing new regional planning initiatives and expansion projects to better connect and enhance mobility in the MARTA service area:

- ✓ Arterial Rapid Transit (ART)
- ✓ **Bus Rapid Transit (BRT)**
- ✓ Light Rail Transit (LRT)
- ✓ Transit Hubs
- ✓ Station Enhancements/New Facilities



MARTA BUS RAPID TRANSIT

Key Components and Features

Bus Only

Dedicated Lanes (at least 50%)



Frequent service



Enhanced Station Amenities



Increased Station Spacing



Unique Branding



Transit Signal Priority



MARTA RAPID SUMMERHILL

Under Construction

- ✓ MARTA Bus Rapid Transit service branded as MARTA Rapid
- ✓ Premium transit connecting the downtown Atlanta to the Atlanta BeltLine
- ✓ Funded with \$12M TIGER FY2017 grant
- ✓ 85% dedicated lanes
- ✓ Transit signal priority (TSP)
- ✓ Stations with level boarding platforms and upgraded passenger amenities
- ✓ Serves several major institutions, government facilities, employment centers and residential communities



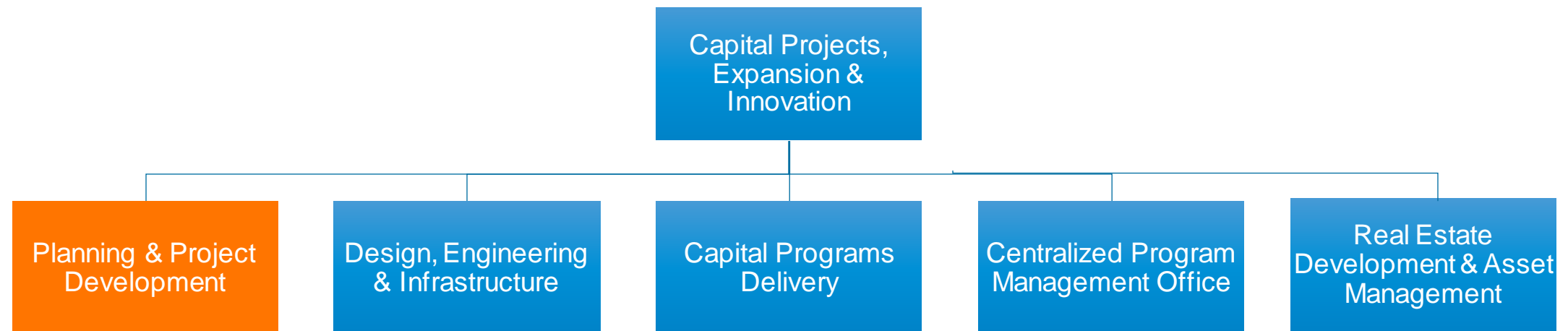


PROJECT DEVELOPMENT/

**FTA CIG PROGRAM,
FEDERAL FUNDING**


MARTA PLANNING & PROJECT DEVELOPMENT

- ✓ Planning, conceptual design, and monitoring of bus and rail services
- ✓ Short and long-range planning activities including service planning, bus stop planning, ridership modeling, environmental studies, regional system planning
- ✓ Local and Federal major capital expansion projects from initiation through preliminary engineering (30% design)



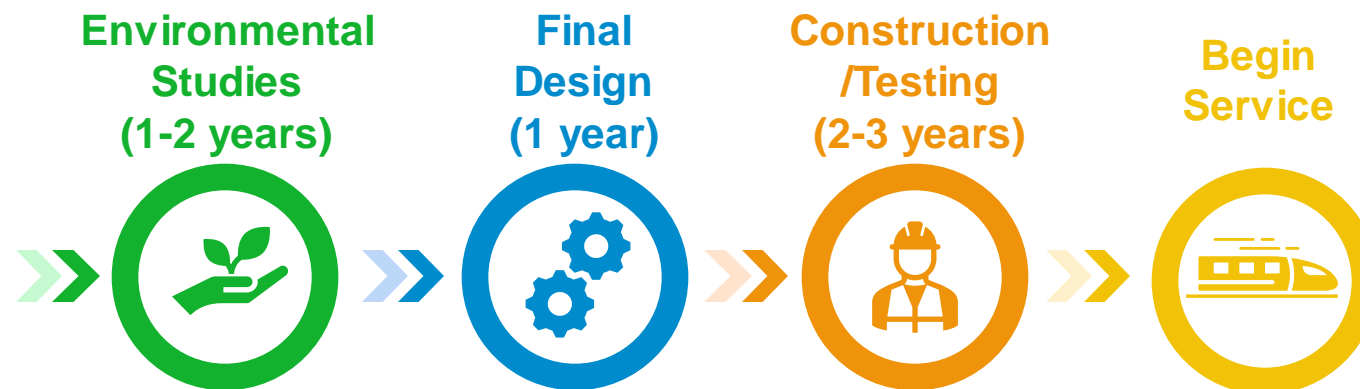
PROJECT DEVELOPMENT PROCESS

Alternatives Analysis/Planning
(2-3 years)

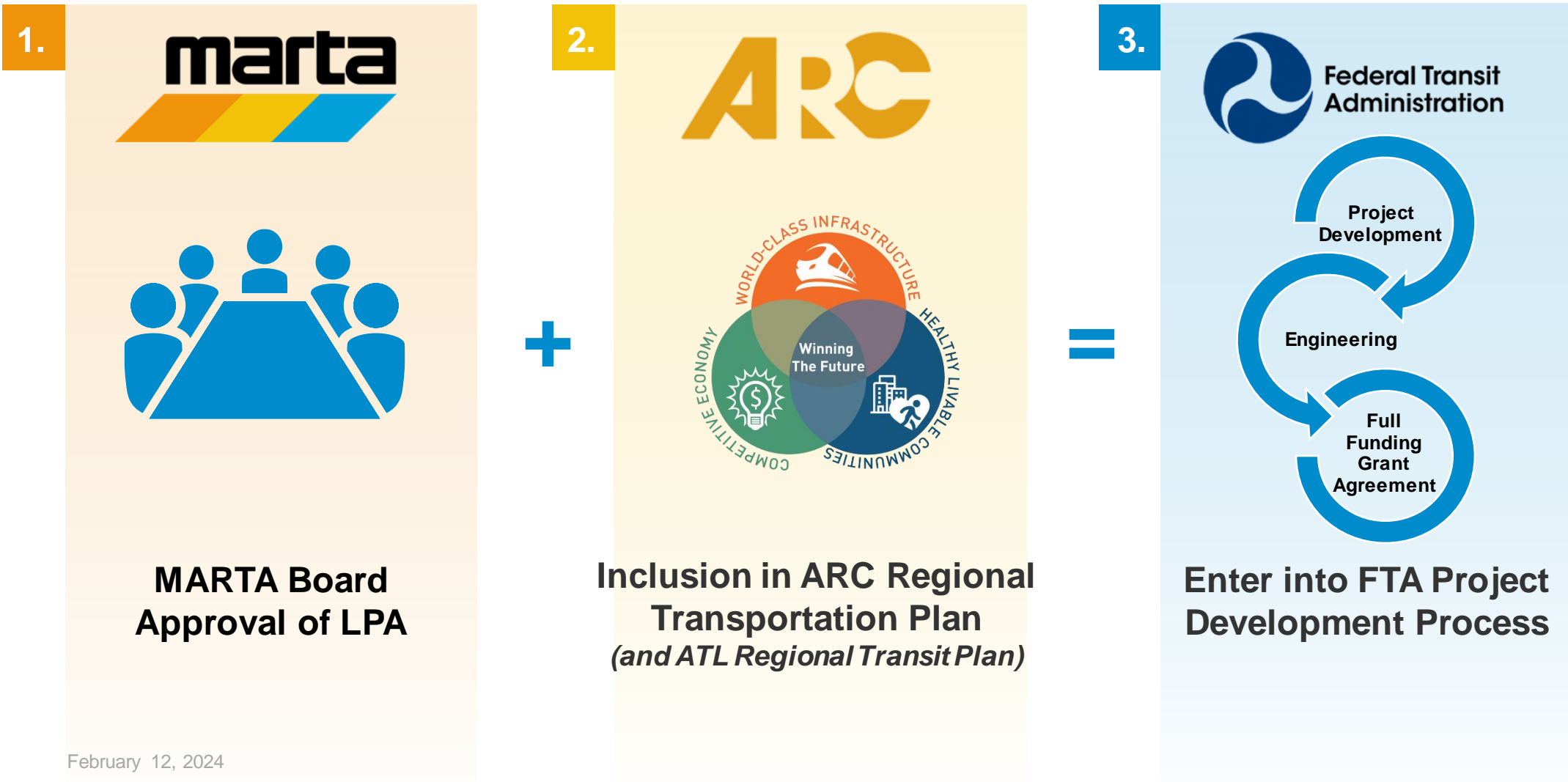


- Analyze existing conditions/Purpose & Need
- Define full range of alternatives
- Undertake technical screening
- Recommend locally preferred alternative (LPA)

Important first step towards federal funding!



PROJECT DEVELOPMENT PROCESS



FEDERAL FUNDING FTA CAPITAL INVESTMENT GRANTS (CIG) PROGRAM

- ✓ Largest Federal Transit Administration's (FTA) discretionary grant program
- ✓ Funds rail and bus rapid transit projects based on project evaluation and rating process

New Starts

- ✓ Fixed guideway BRT projects
- ✓ Greater than \$400M
- ✓ Seeking greater than \$150M in CIG funds
- ✓ CIG max funding of 60% of total cost

Small Starts

- ✓ Fixed guideway or corridor based BRT projects
- ✓ Less than \$400M
- ✓ Seeking less than \$150M in CIG funds
- ✓ CIG max funding of 80% of total cost

Core Capacity

- ✓ Project capacity expansion by 10% or more in existing fixed guideway corridor
- ✓ Corridor at capacity today or within the next 10 years
- ✓ CIG max funding of 80% of total cost

MARTA RAPID PROJECTS

Entry in Project Development for FTA CIG Small Starts

- ✓ Pre-award authority from Federal Transit Administration (FTA) of \$8.1M
- ✓ Advancement of environmental studies
- ✓ New alignment connections to improve projects
- ✓ **Clayton Southlake** – Over 60% dedicated lanes and signal priority will provide faster, more reliable service to the City of Riverdale and Southlake Mall
- ✓ **Campbellton Corridor** – 100% dedicated center-running/exclusive lanes and signal priority will provide a 35% travel time savings over existing local bus service





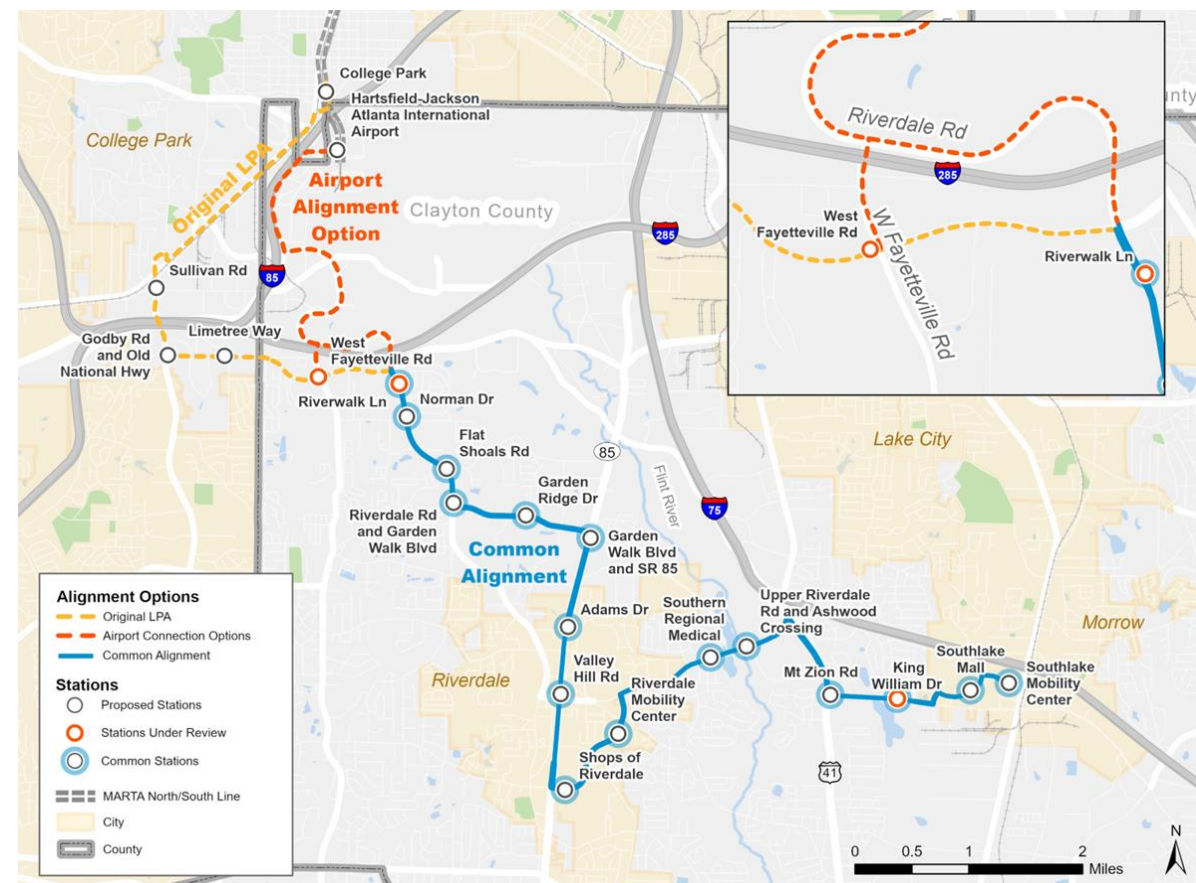
MARTA RAPID SOUTHLAKE

MARTA RAPID SOUTHLAKE

Project Description

- ✓ BRT service from the Airport, connecting Riverdale, Southern Regional Medical Center, and Southlake Mall
- ✓ Approximately 15 - mile corridor
- ✓ Over 60% dedicated lanes
- ✓ Route 196 exhibits consistently high ridership
- ✓ Increased access to jobs
- ✓ Improved travel time to MARTA Rail
- ✓ Projected Service Start: 2030*

*Pending MARTA Board update of LPA.



MARTA RAPID SOUTHLAKE

Project Status

- ✓ Airport Connection Assessment completed in September 2023
- ✓ Coordination with Clayton County & local jurisdictions, GDOT, City of Atlanta (Aviation & DOT)
- ✓ Updating environmental documents
- ✓ Advancement of design activities



MARTA RAPID SOUTHLAKE

Next Steps

- ✓ Conduct upcoming public outreach activities
- ✓ Present amended LPA to MARTA Board
- ✓ Continued coordination with key project stakeholders
- ✓ CIG application submittal
- ✓ Solicitation and selection of a final designer
- ✓ Advance 30% design plans



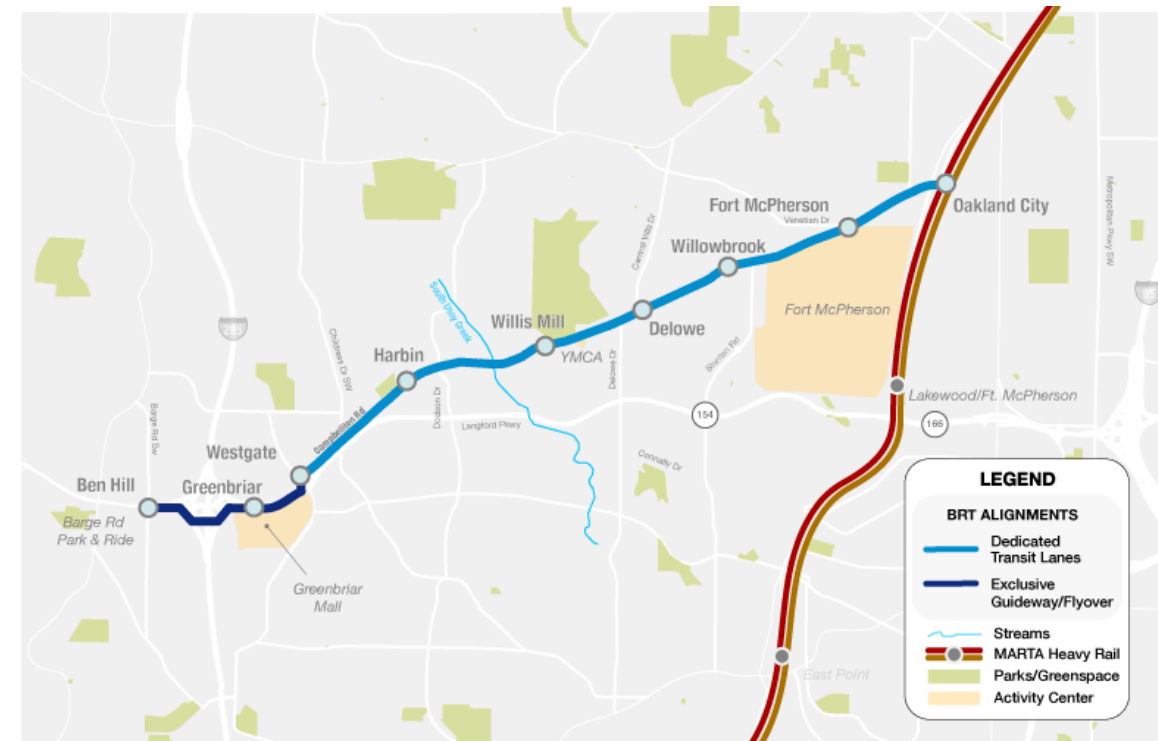


MARTA RAPID CAMPBELLTON

MARTA RAPID CAMPBELLTON

Project Description

- ✓ Connects key destinations: Oakland City Station, Ft. McPherson, Delowe Drive, Greenbriar Mall area, Barge Road Park & Ride
- ✓ 6 miles in length
- ✓ 9 stations
- ✓ 100% dedicated lanes
- ✓ 18-minute travel time (35% faster than Route 83)
- ✓ Bike/ped facilities
- ✓ Wider sidewalks
- ✓ Projected Service Start: 2028



MARTA RAPID CAMPBELLTON

Project Status

- ✓ Original LPA approved by MARTA Board in July 2022
- ✓ Amended LPA approved in August 2023
 - ✓ BRT flyover over I-285 with exclusive bus only lanes
 - ✓ Direct connection to Barge Road Park & Ride
- ✓ Substantial completion of 30% design along Campbellton Road alignment
- ✓ Evaluating Greenbriar Transit Hub sites



MARTA RAPID CAMPBELLTON

Next Steps

- ✓ Advance 30% design of flyover alignment
- ✓ Initiate environmental special studies
- ✓ Upcoming public outreach activities in Spring 2024
- ✓ Continued coordination with City of Atlanta
- ✓ CIG application submittal in Summer 2024
- ✓ Advance Greenbriar Transit Hub design





FUTURE PLANNING INITIATIVES

PURSUING FTA CIG FEDERAL FUNDING

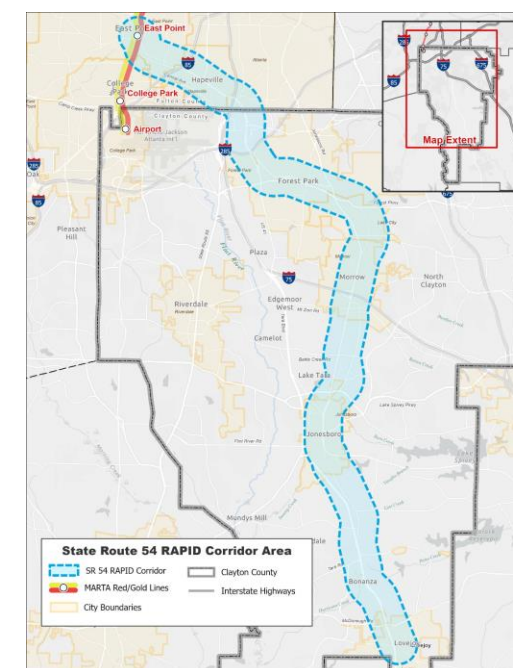
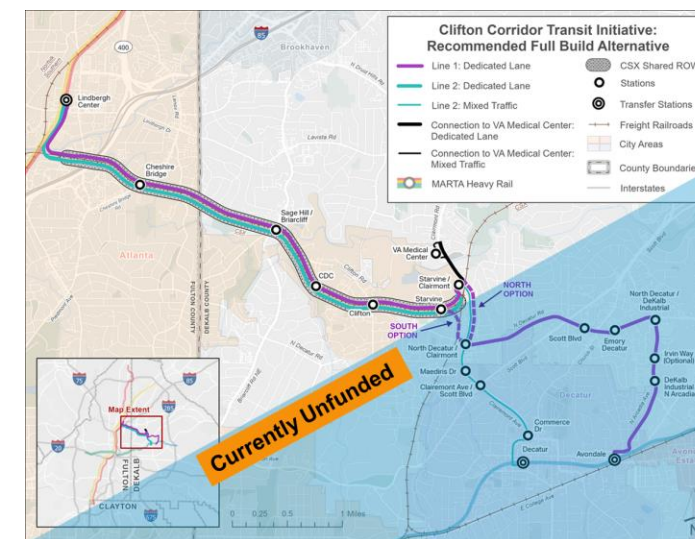
FUTURE PLANNING INITIATIVES

Planning

Future FTA Capital Investment Grant (CIG) Requests

- ✓ Improved reliability through new dedicated transit infrastructure and transit signal priority
- ✓ Stations with level boarding platforms and upgraded passenger amenities
- ✓ **Clifton Corridor** – exclusive transitway will improve access to one of the region’s largest and most congested job centers
- ✓ Projected Service Start: 2028 (MOS) / TBD (Full Build)*
- ✓ **Clayton SR54** – 22-mile corridor from MARTA’s East Point Station to the City of Lovejoy, serving Clayton State University and a new Clayton Justice Center Transit Hub
- ✓ Projected Service Start: 2030

*Pending MARTA Board update of LPA. Minimum Operable Segment (MOS) currently based on More MARTA Atlanta Sequencing Plan. DeKalb County portion currently unfunded.



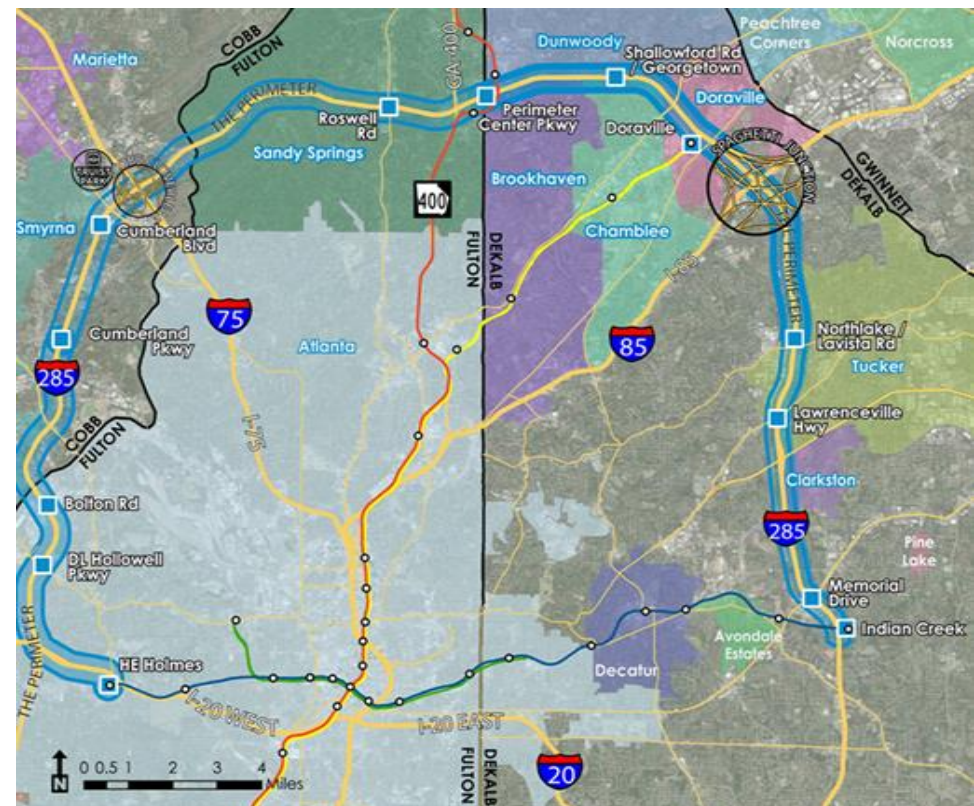
FUTURE PLANNING INITIATIVES

Planning

Future FTA Capital Investment Grant (CIG) Requests

- ✓ Operating in new GDOT Managed Lanes
- ✓ New stations with amenities and vertical infrastructure for pedestrian access
- ✓ **I-285** - MARTA is leading a regional effort to vision, scope, plan and design transit along a 35-mile corridor
- ✓ Projected Service Start: TBD*
- ✓ **GA-400** - 12-mile corridor connecting North Fulton County to the MARTA rail system using inline stations
- ✓ Projected Service Start: TBD*

**Projects are currently unfunded. Continued coordination with GDOT's SR 400 & I-285 Express Lanes project schedules.*



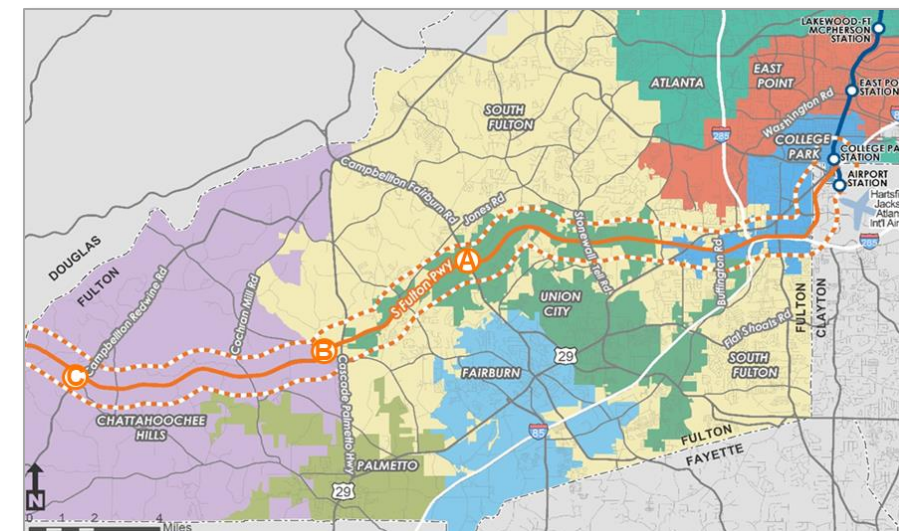
FUTURE PLANNING INITIATIVES

Planning

Future FTA Capital Investment Grant (CIG) Requests

- ✓ MARTA is studying bus and rail high-capacity transit alternatives in several other corridors
- ✓ **South Fulton Parkway** – 25-mile developing corridor in South Fulton County
- ✓ Projected Service Start: TBD*
- ✓ **South DeKalb** – 15-mile corridor connecting MARTA's east rail line to the new Stonecrest Transit Hub along the I-20 East corridor
- ✓ Projected Service Start: TBD*

*Projects are currently unfunded.





Thank You

